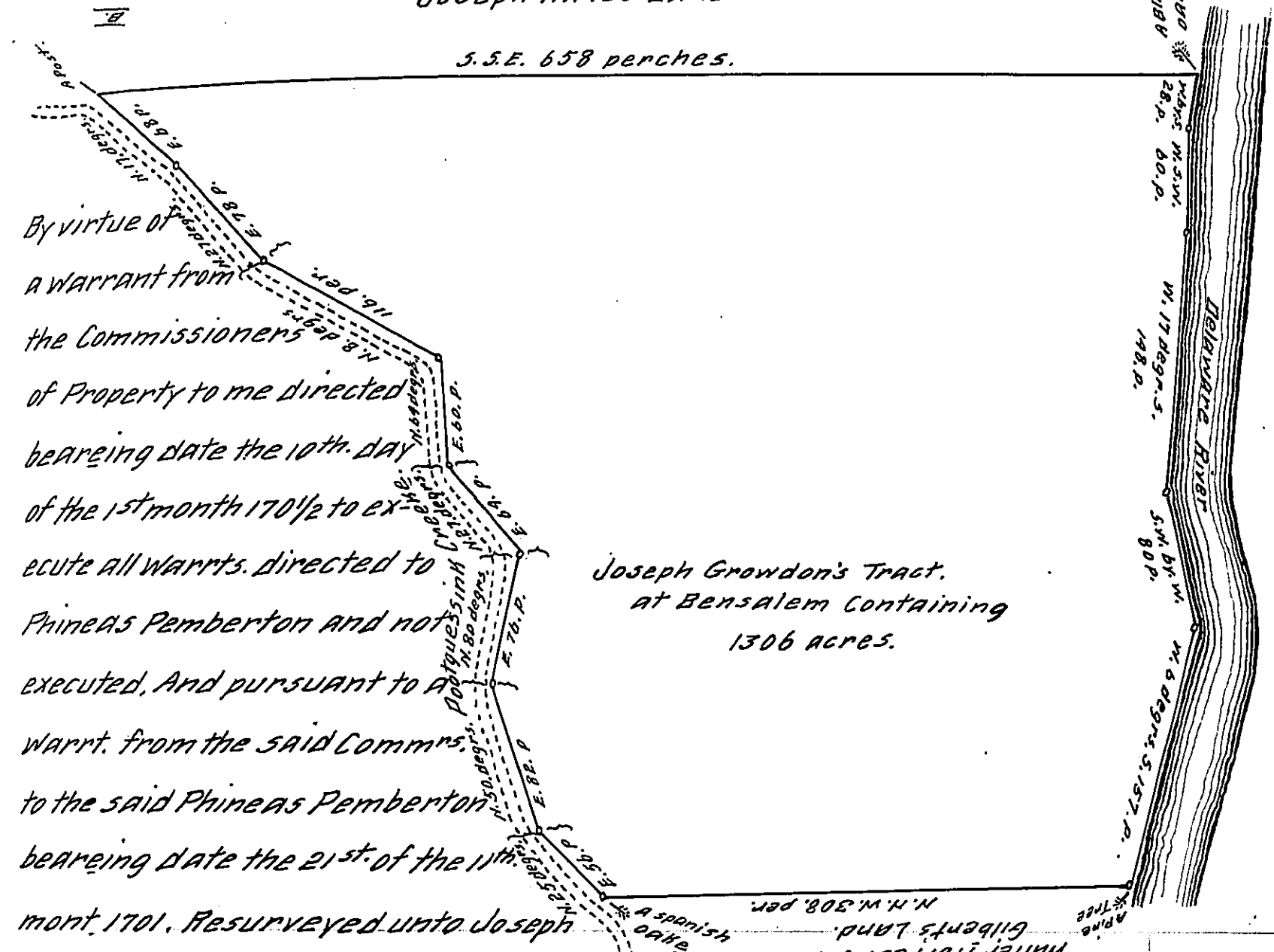


D-72-260

Joseph Kirle's Land.



By virtue of
 a warrant from
 the Commissioners
 of Property to me directed
 bearing date the 10th. day
 of the 1st month 170 1/2 to ex-
 ecute all warnts. directed to
 Phineas Pemberton and not
 executed, And pursuant to a
 warnt. from the said Commrs.
 to the said Phineas Pemberton
 bearing date the 21st. of the 11th.
 mont. 1701. Resurveyed unto Joseph

Joseph Growdon's Tract.
 at Bensalem Containing
 1306 acres.

Growdon A Tract of Land called Bensalem scituate in the County of
 Bucks. Beginning at a Pine tree by the River Delaware, being the corner
 of Abbason and Satorthwait's land. Thence by the sd. Land, and John
 Gilbert's land N. N. W. 308 per. to a Spanish Oak by Poetques sink
 Creek. Then up the said Creek N. 25 gr. E. 56 p.; Then N. 50 gr. E. 82. Then
 N. 80 gr. E. 76 p. Then N. 27 gr. E. 64 p. Then N. 64 gr. E. 60 p. Then N. 8 gr. E. 116 p.
 Then N. 27 gr. E. 78 p. Then N. 17 gr. E. 68 p. Then N. N. W. 6 p. to a Post at Joseph
 Kirle's Corner. Then by the said Kirle's land S. S. E. 658. perches
 to a Corner marked Black Oak by the said River. Then down the
 same W. by S. 28 p. To obl. W. S. W. 60 p. Then W. 17 gr. S. 148 p. Then S. W.
 by W. 80 p. Then W. 6 gr. S. 157 p. to the place of beginning. Contain-
 ing 1306 acres. Resurveyed the 27th day of the first month 170 1/2.

By me John Cutler.

IN TESTIMONY that the above is a copy of the original remaining on file in
 the Department of Internal Affairs of Pennsylvania, made
 conformably to an Act of Assembly approved the 16th day of
 February, 1833, I have hereunto set my Hand and caused
 the Seal of said Department to be affixed at Harrisburg,
 this sixth day of May 1909-

Henry Howell
 Secretary of Internal Affairs.